

Infectiepreventiebeleid in woonzorgcentra(WZC): delen we dezelfde zorginfecties?

Annemie Van den Abeele
AZ Sint-Lucas Gent

2008: Maken wij de juiste keuzes?

experts twijfelen over infectiepreventie beleid

INFECTION CONTROL AND HOSPITAL EPIDEMIOLOGY NOVEMBER 2008, VOL. 29, NO. 11

ORIGINAL ARTICLE

Screening for MRSA: A Flawed Hospital Infection Control Intervention

Richard P. Wenzel, MD, MSc; Gonzalo Bearman, MD, MPH; Michael B. Edmond, MD, MPH, MPA

Focusing hospital resources on a single antibiotic-resistant pathogen as a sole approach to infection control is inherently flawed. We applied attributable mortality principles to a basic model of bloodstream infections to outline the argument. Screening for methicillin-resistant *Staphylococcus aureus* alone made sense in the 1980s, but the ongoing emergence of vancomycin-resistant enterococci and antibiotic-resistant strains of gram-negative rods and *Candida* species, as well as the recognition of the value of team-based infection control programs, support a population-based approach.

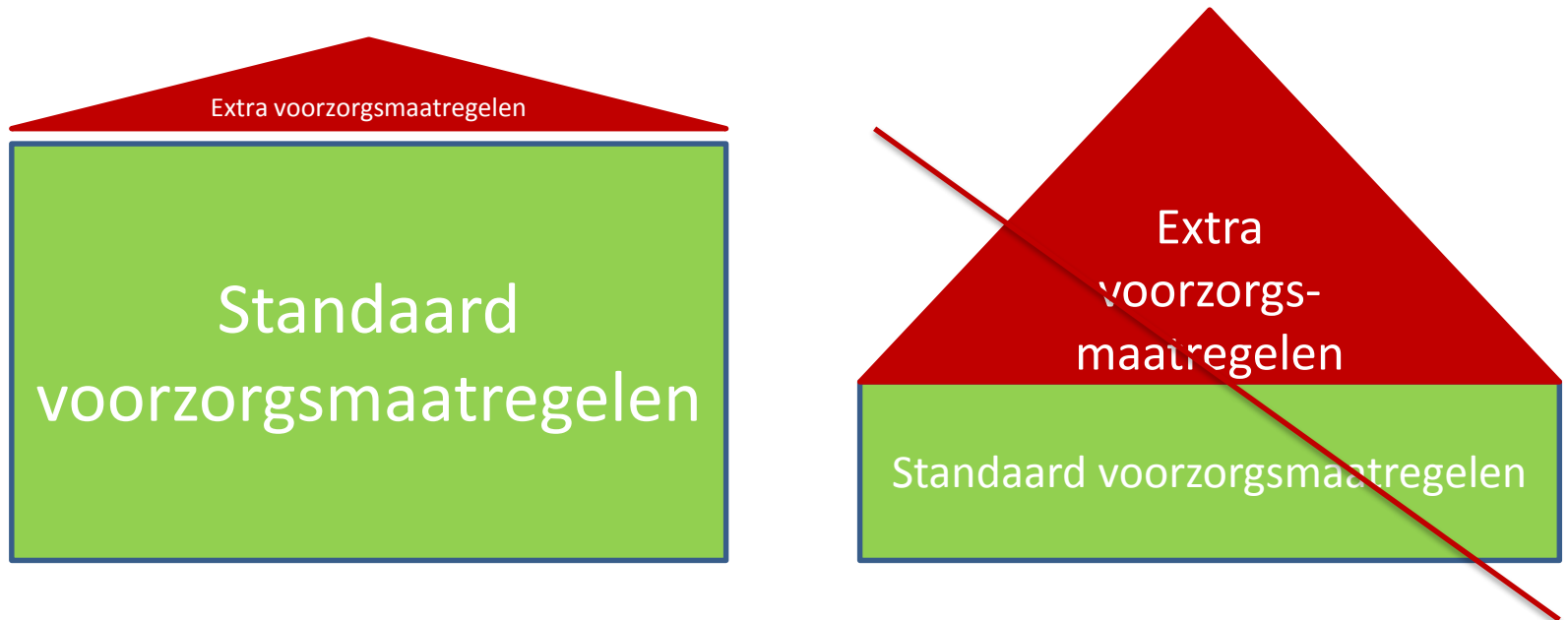
Infect Control Hosp Epidemiol 2008; 29:1012-1018

2008: Maken wij de juiste keuzes?

ORIGINAL ARTICLE

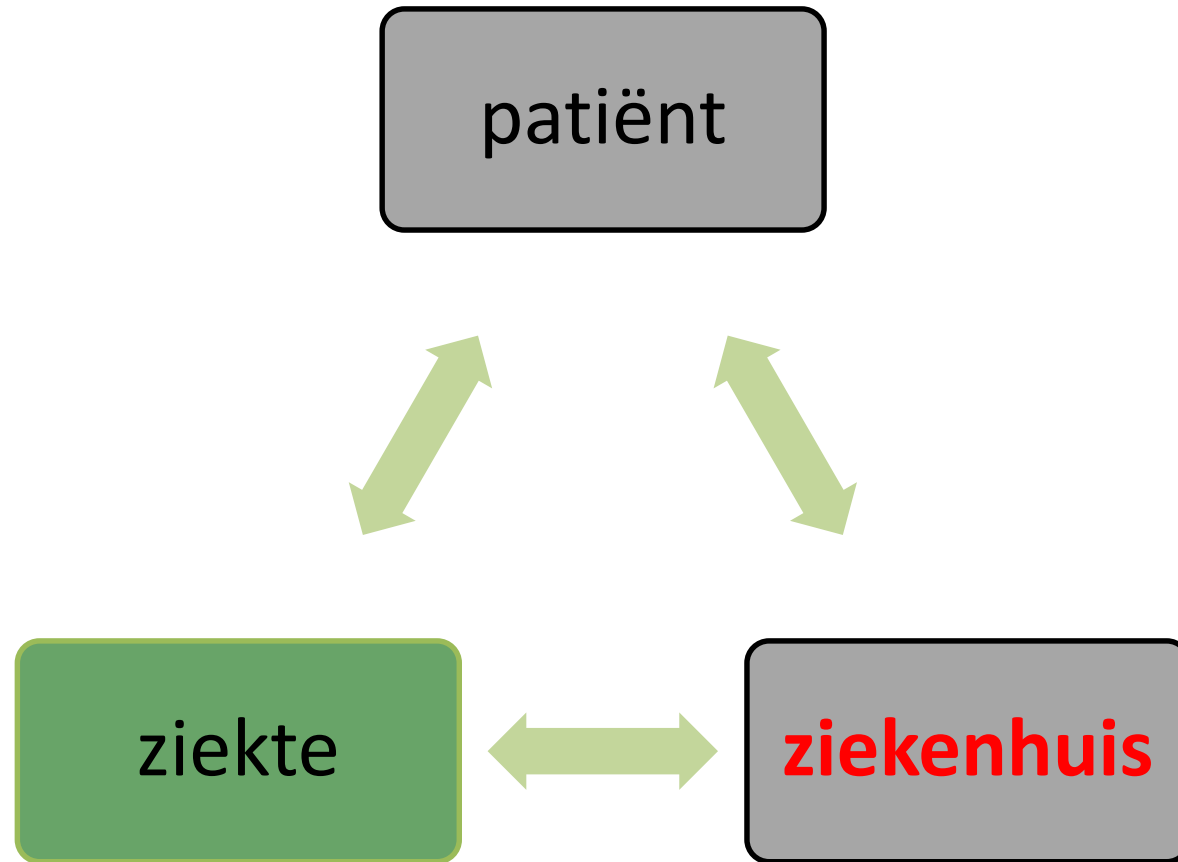
Screening for MRSA: A Flawed Hospital Infection Control Intervention

Richard P. Wenzel, MD, MSc; Gonzalo Bearman, MD, MPH; Michael B. Edmond, MD, MPH, MPA



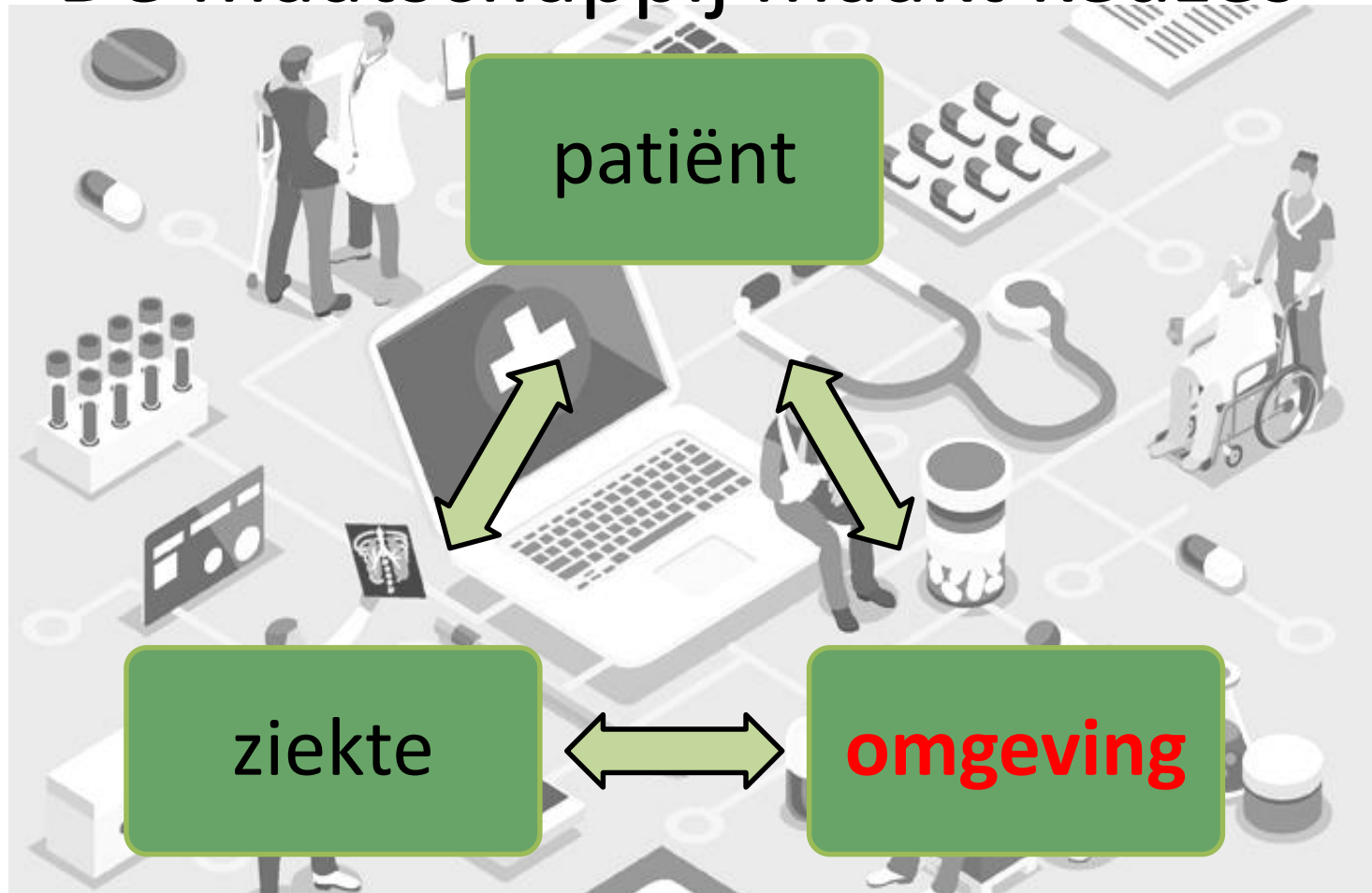
2008:

Focus op DE patiënt in DE omgeving?



2018:

De maatschappij maakt keuzes



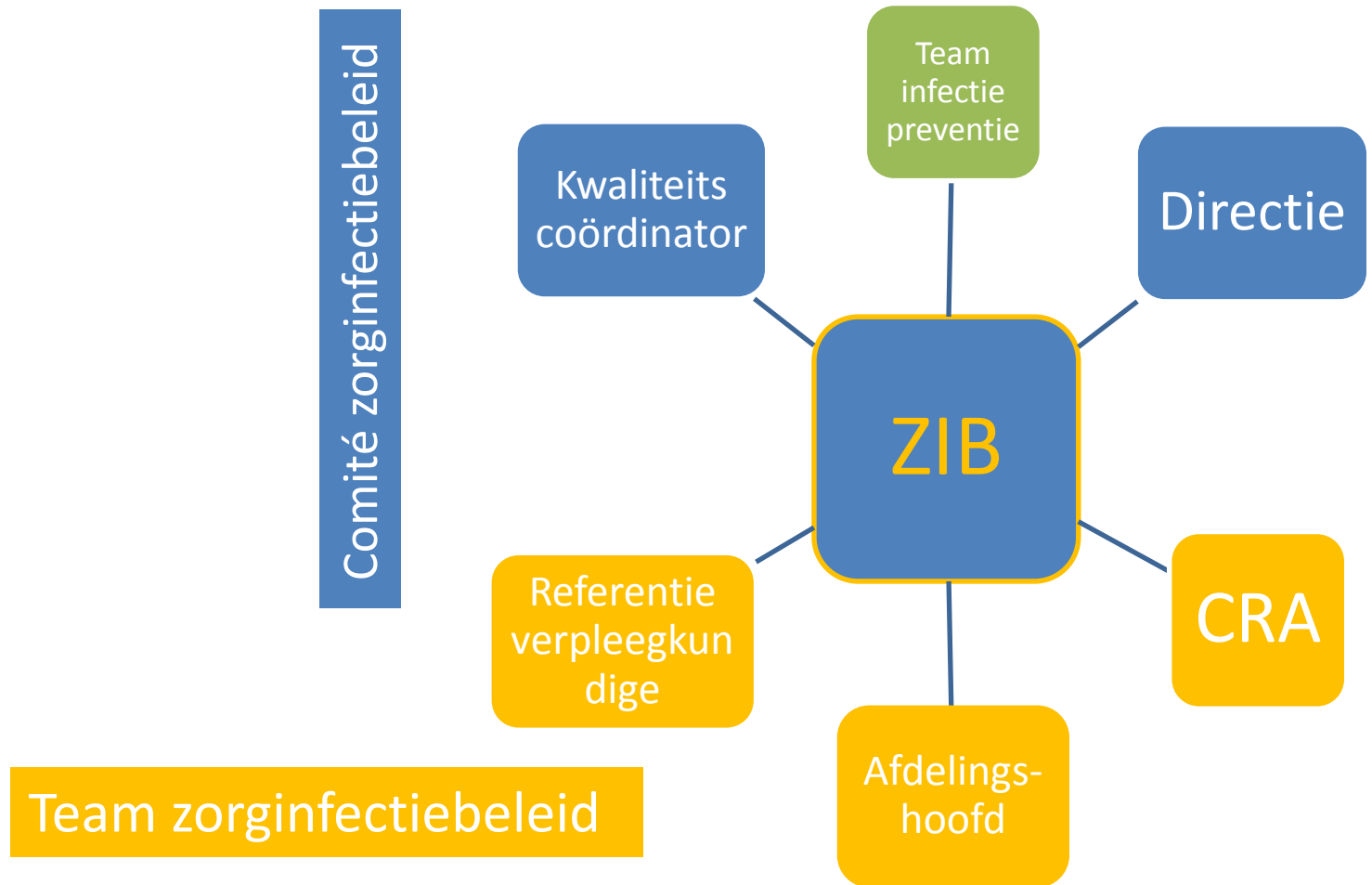
2018: Het ziekenhuis bestaat niet meer?!



Voorzichtig proberen?



Zorginfectiebeleid in woonzorgcentra:



Voorzichtig proberen met ondersteuning?



AGENTSCHAP
ZORG &
GEZONDHEID

ouderenzorg

Healthcare-associated Infections